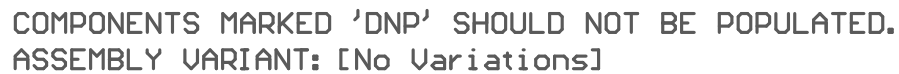
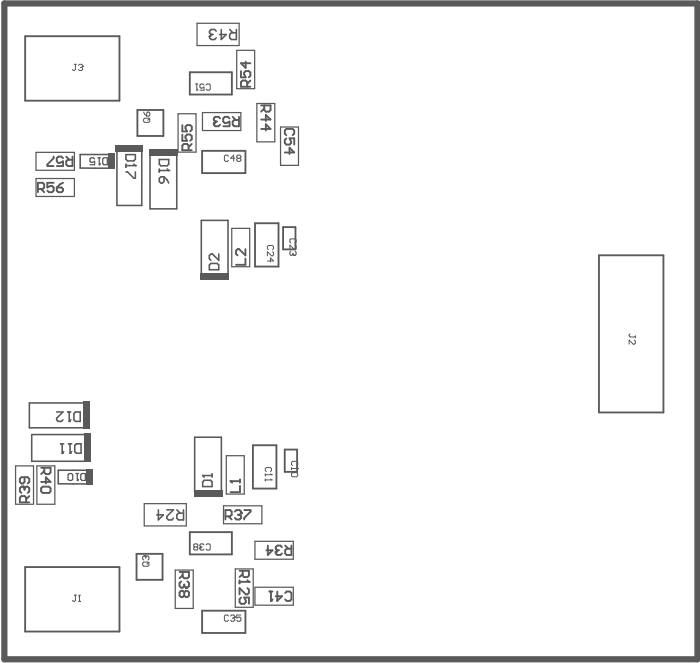


ZZ4 ■ These assemblies must comply with workmanship standards IPC-A-610 Class 2, unless otherwise specified.



PCB VIEWED FROM TOP SIDE	BOARD #: TIDA-011012	GD REV: E1	SVN REV: 6951 [Locally Modified]
PLOT NAME = Top Assembly Drawing	GENERATED : 03/06/2026 16:05:37		TEXAS INSTRUMENTS



COMPONENTS MARKED 'DNP' SHOULD NOT BE POPULATED.
ASSEMBLY VARIANT: [No Variations]

PCB VIEWED FROM BOTTOM SIDE	BOARD #: TIDA-011012-GD REV: E1	SUN REV: 6951 [Locally Modified]
PLOT NAME = Bottom Assembly Drawing	GENERATED : 03/06/2026 16:05:37	TEXAS INSTRUMENTS